



EcoOnline Training & eLearning

Training & eLearning

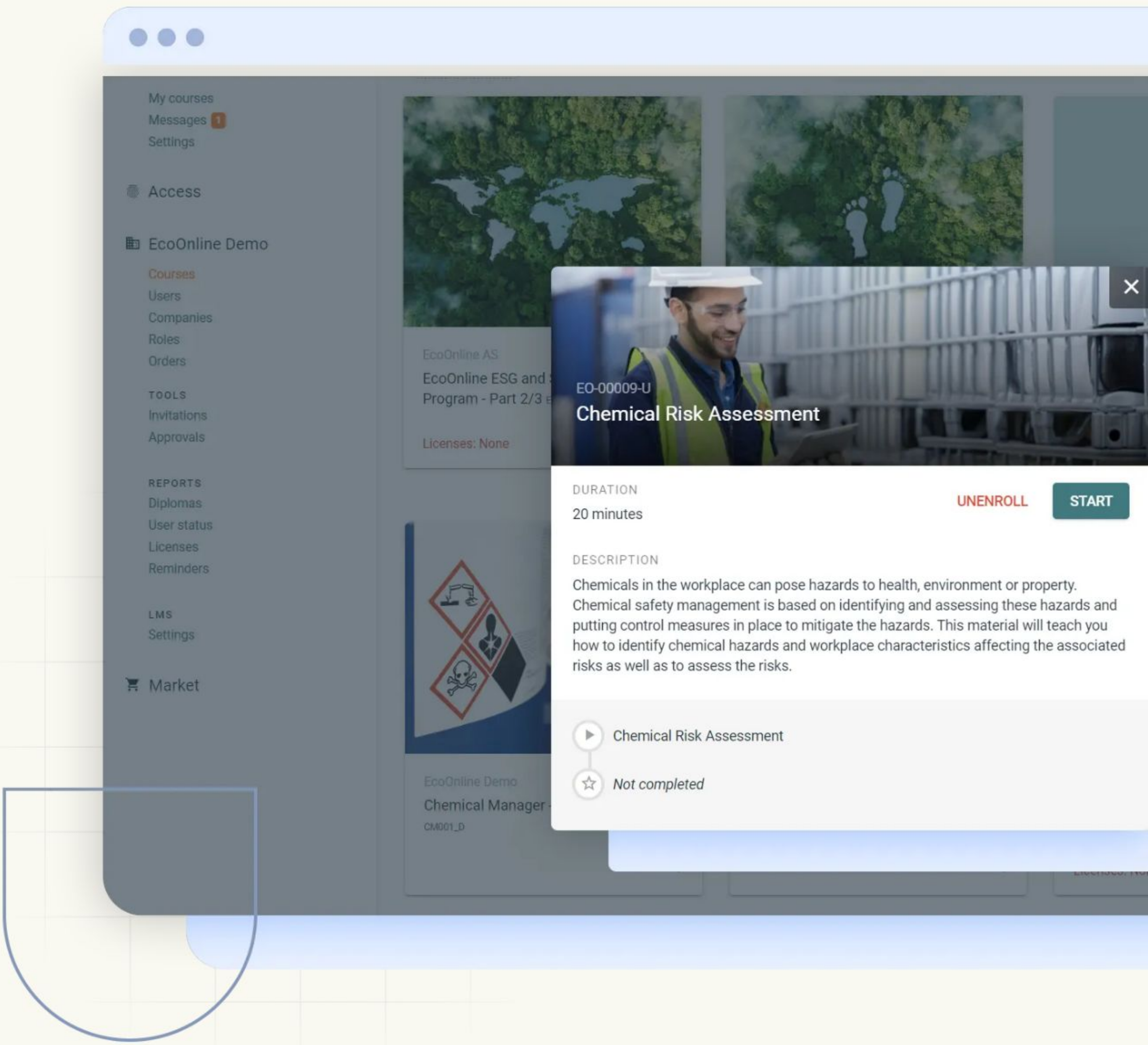
Empower your frontline workers with engaging health and safety training using our intuitive learning management system.



Seamlessly integrated with our EHS solution, EcoOnline provides digital-first training and eLearning, empowering frontline workers with engaging health and safety content.

The easy to use, self-service training system —accessible on both desktop and mobile— empowers employees to work safely and efficiently.

Health and safety teams can build courses, manage role-based training requirements, and proactively assign training to be compliant.



Prevent injuries with learning that lasts.



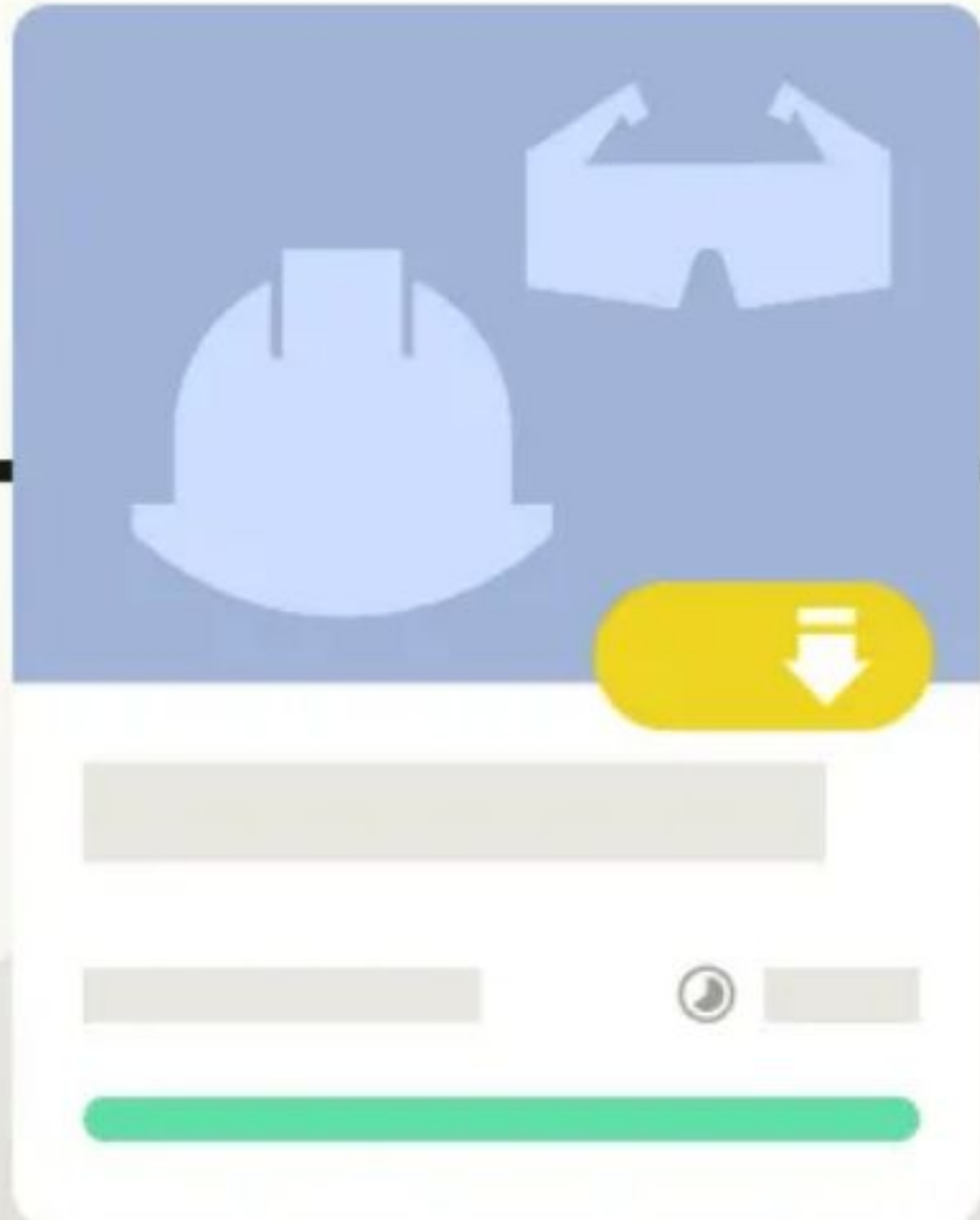
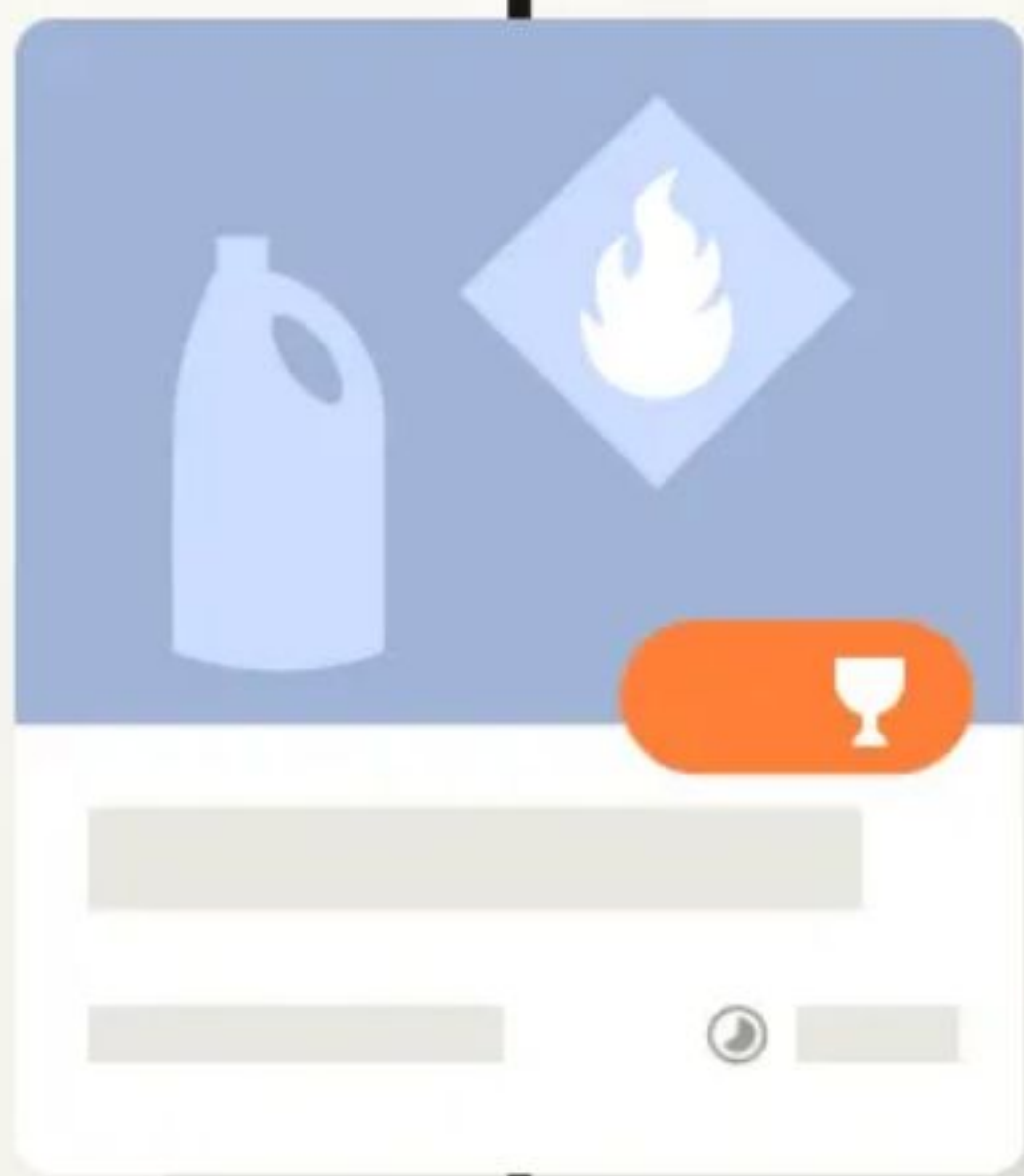
Scale health and safety training at speed.



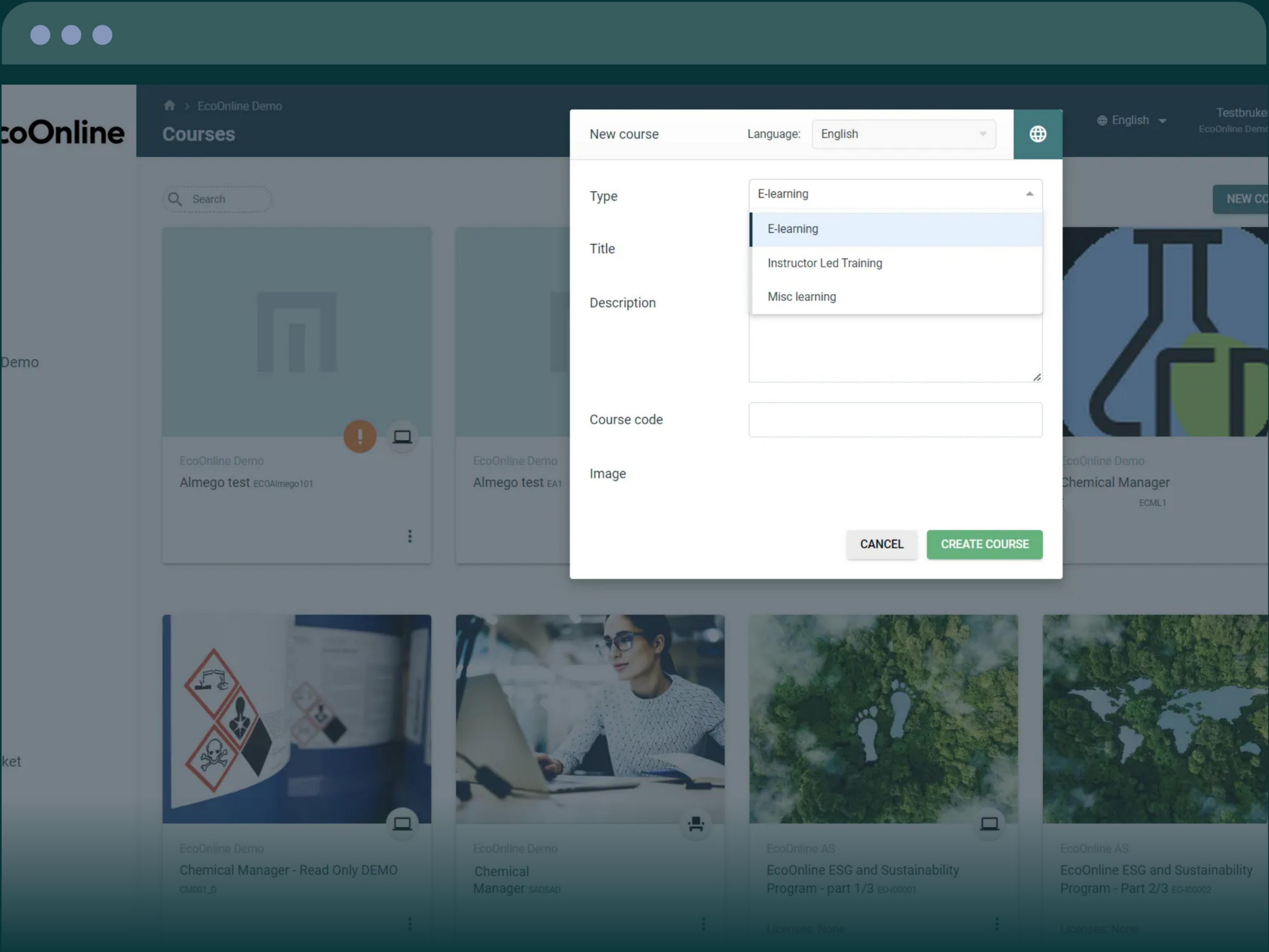
Control the learning of internal workers and external contractor workers.



Maintain compliance and avoid costly fines.

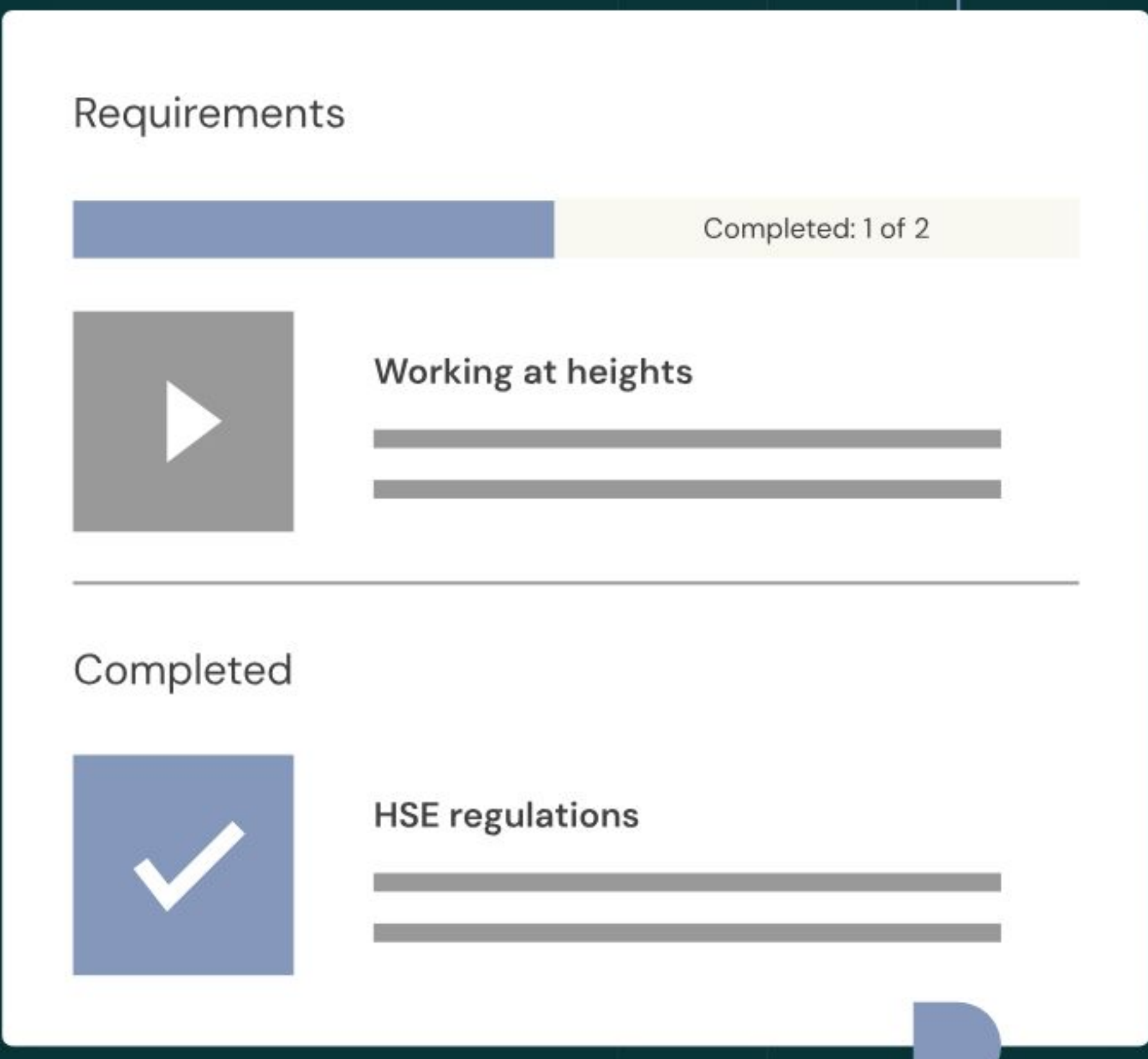


Continue reading



Reduce admin time and gain a reliable audit trail

- Our EHS software integration lets users assign courses to employees after workplace incidents, track course completion, and manage training records.
- Users can also assign training tasks with start and due dates to individual employees enabling a more data-driven, proactive, and comprehensive approach to safety management.

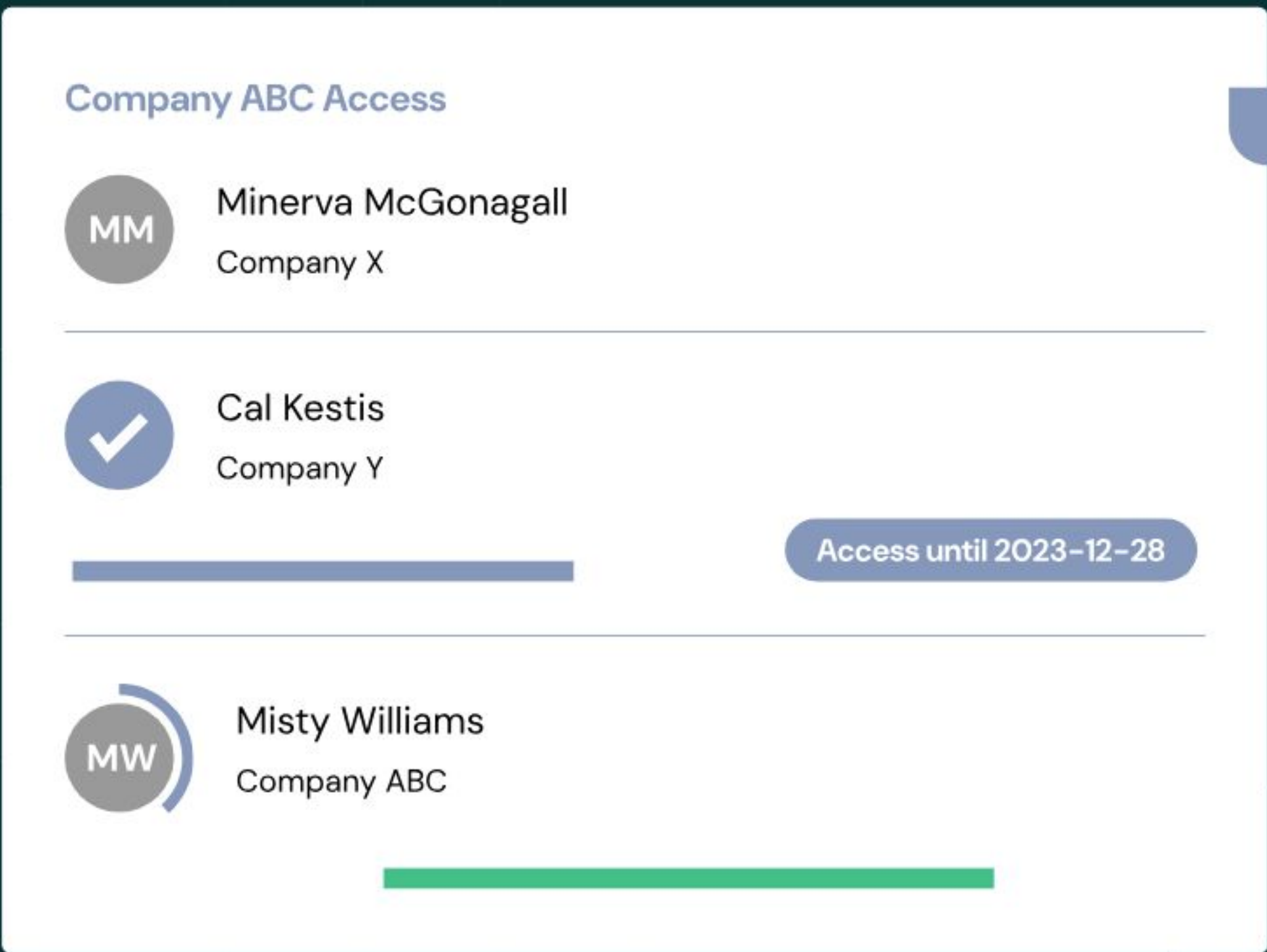


Quickly build and execute new training

- EcoOnline's LMS enables you to build, edit, and publish training courses using a variety of media.
- Easily create dynamic, customizable quizzes for your courses with our latest AI-powered tool.
- Start building learning paths for unique roles and send invitations.
- Remove the cumbersome task of administering and managing health and safety training for internal and external workers with a straightforward, easy-to-use system.

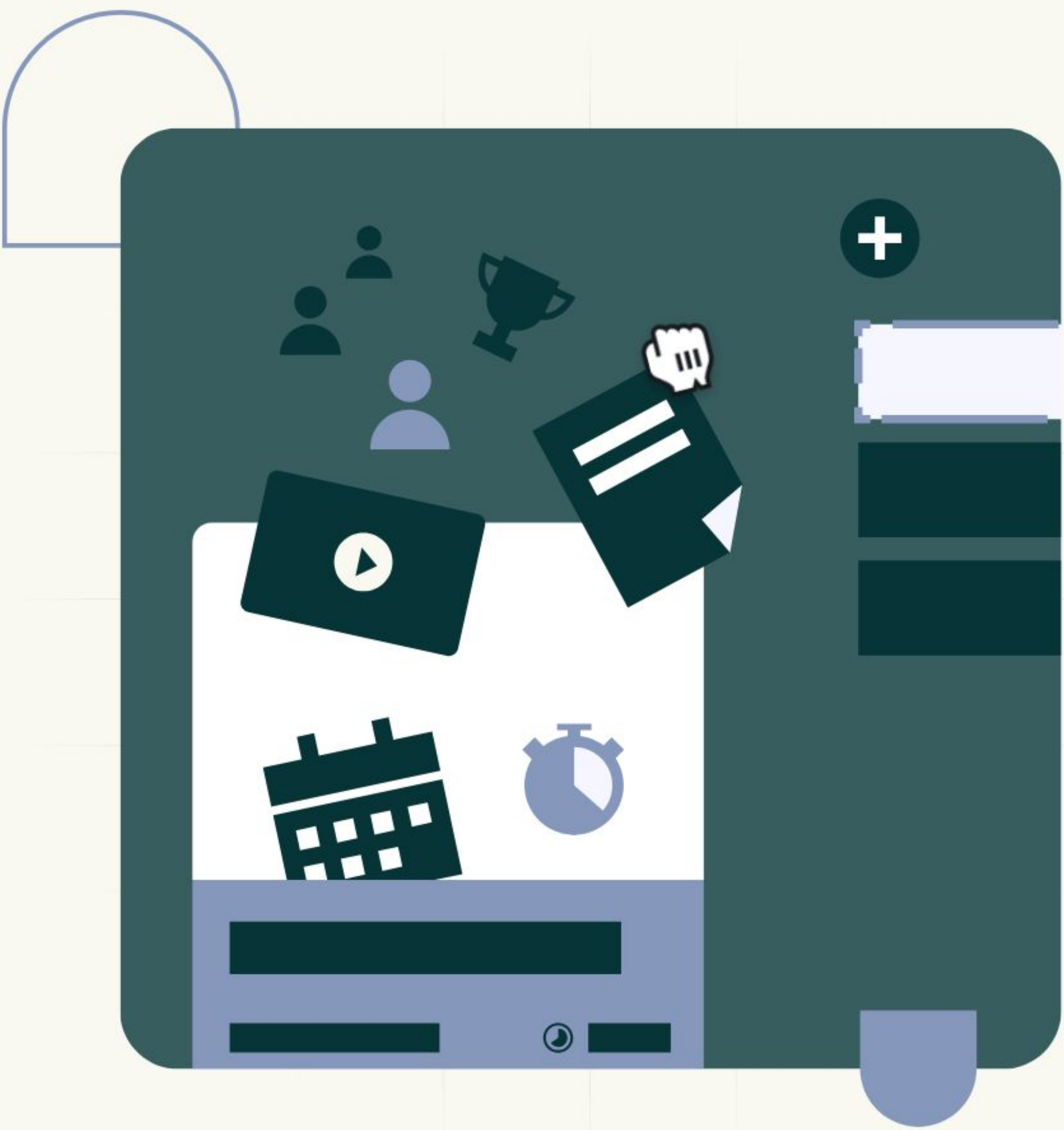
Off-the-shelf health and safety eLearning content

- Empower your frontline workers with engaging health and safety content.
- Put learning in your worker's hands with the ability to self-service in an easy-to-use training system.
- Available on desktop or mobile allowing users to complete training on their schedule.



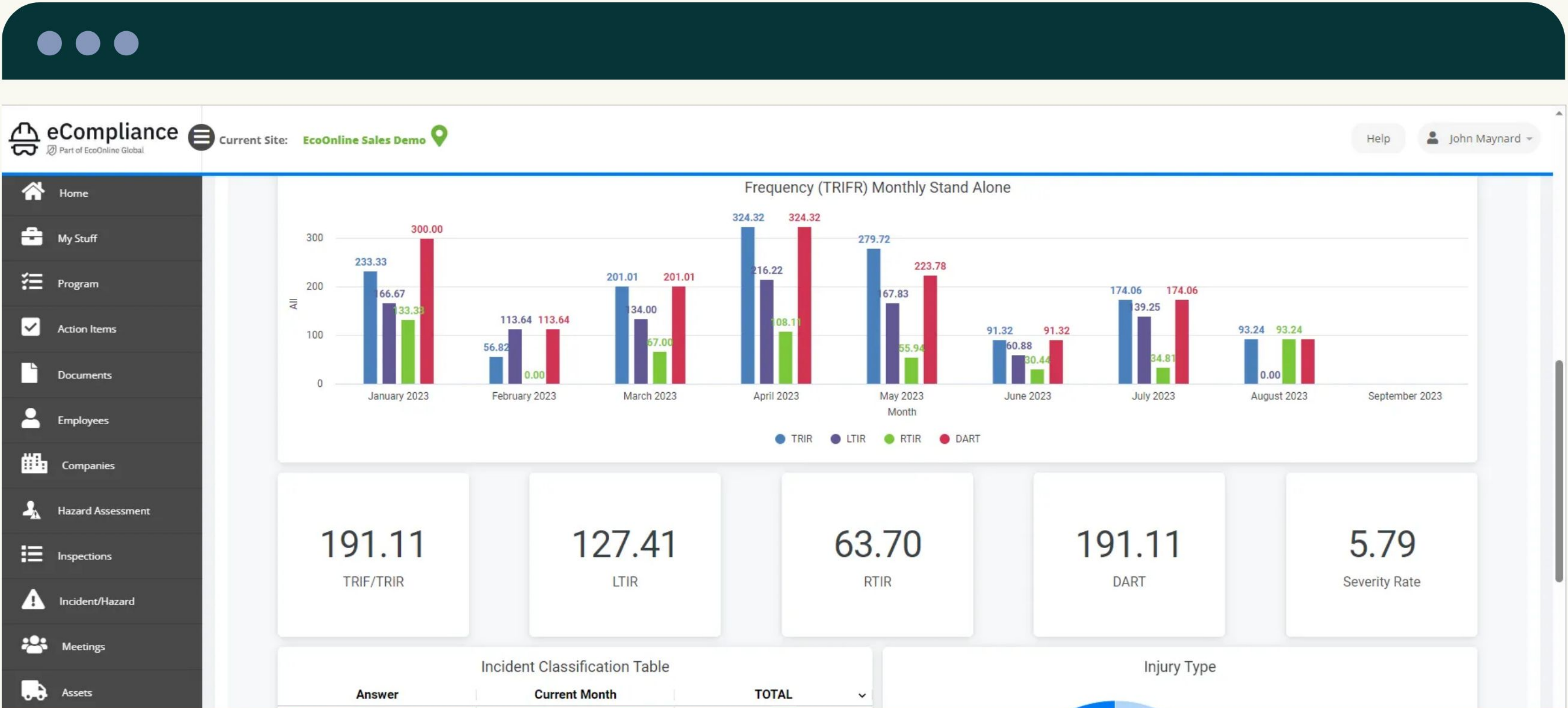
LMS

- Assign and distribute learning to internal and external workers.
- Contractors can complete required training ahead of their work through link-based self-enrollment.
- Easily add courses from the course list, and send it to the trainees with an invitation.
- EHS integration allows employers to access real-time competence data insights in one convenient place.
- Web-adaptive browsing makes EcoOnline's LMS smartphone and tablet friendly.
- Choose from 22 system languages for ease of use across your global sites.



eLearning content

- Gain flexibility and relevance with our essential in-house content alongside the credibility and compliance benefits of third party industry-recognized training.
- Increase participation with engaging multimedia content built by health and safety learning experts. Boost learning transfer and promote new and safer behaviours.



Trusted by global enterprises

"The availability of the right expertise is important to us. Now we can take courses at anytime, wherever we are and all documentation is collected in one place. This gives us a good overview."

Monica Gjersund, HR consultant

NASTA®



400,000+

workers trained and compliant



reduction

of untrained contractor and worker personnel showing up onsite to work



EcoOnline delivers innovative environment, health and safety (EHS), chemical management, training & eLearning, and ESG and sustainability technology solutions to forward-thinking leaders. Founded in 2000 and trusted by over 10,000 brands worldwide, EcoOnline's connected suite of SaaS software enables businesses to protect their people and the planet by ensuring compliance, mitigating risk, and streamlining operations.

Backed by an unwavering commitment to customer success, EcoOnline's software is powerful yet simple to use – built on decades of real-world expertise, data and insights. Visit www.ecoonline.com to immediately and positively impact your workplace safety and sustainability.